

MultiRail

Horizontal safety rail

Available in lengths from 200 - 6000 mm.
Mounting distance: recommended 4000 mm
- max. 6000 mm

Stainless Steel

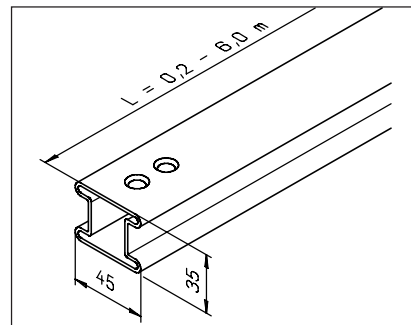
Weight: 2,7 kg/m

Part No. 17488

Standard length 6000 mm

Weight: 16,2 kg/each

Part No. 19146



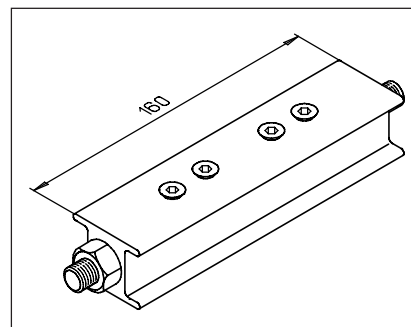
Connector

For connecting individual rail sections.

Anodized Aluminium

Weight: 0,5 kg/each

Part No. 17332



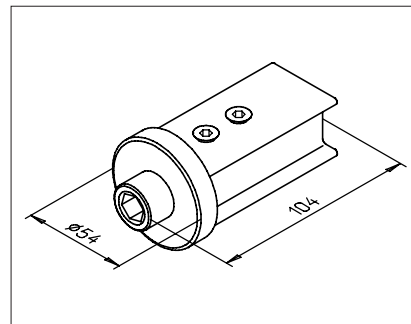
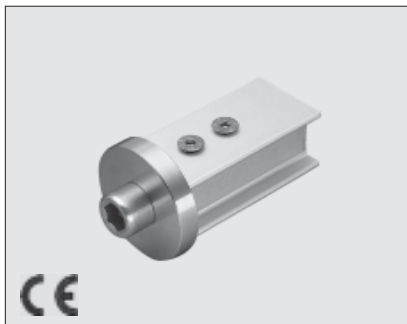
Rail end-stop, without exit

To prevent the glider from running out unintentionally.

Stainless Steel/Anodized Aluminium

Weight: 0,4 kg/each

Part No. 17404



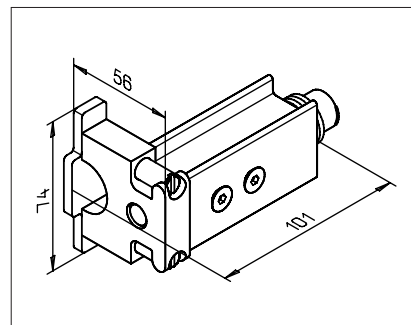
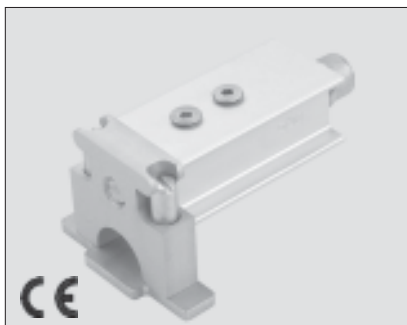
Rail end-stop, with exit

To prevent the glider from running out unintentionally. Removal of the glider by pressing the opening mechanism with one hand.

Stainless Steel/Anodized Aluminium

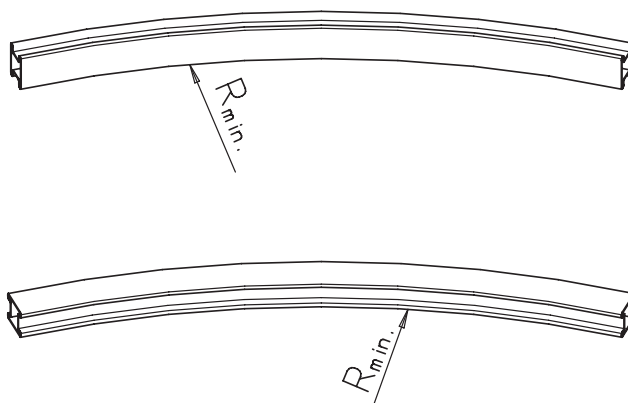
Weight: 0,6 kg/each

Part No. 23956



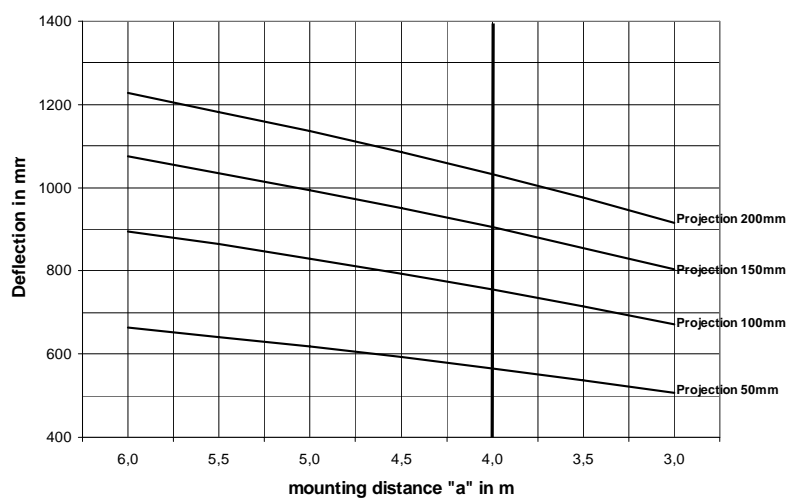
Summarising of the smallest possible bending radius in mm for the anchoring device MultiRail

Part No.	Page	Position of the profile	Minimum radius in mm
			R_{min.}
18270	G 1	Vertical profile	2000
18270	G 1	Horizontal profile	2000



Deflection of the guide rail for the anchoring device MultiRail in case of a fall

The deflection depends from the mounting distance "a" and from the projection of the rail:



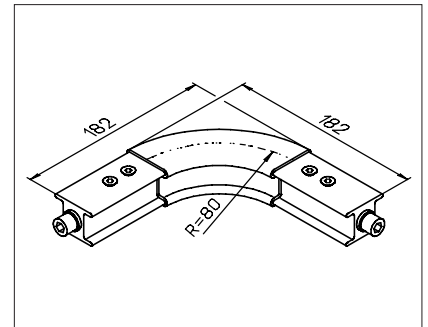
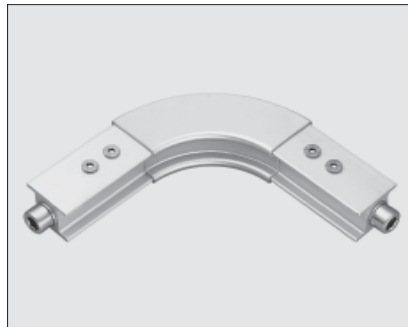
MultiRail

Horizontal bend

For horizontal use as corner turn. $R = 80$ mm, 90° Angles from 30° to 150° are available on request.

Anodized Aluminium

Weight: 0,9 kg/each
Part No. 17331

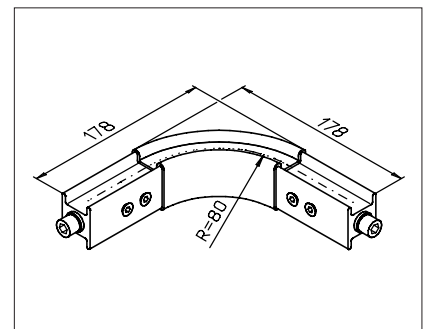
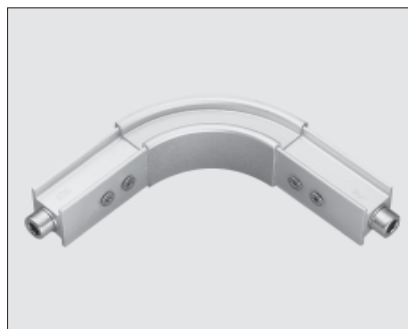


Vertical bend

For vertical use as corner turn. $R = 80$ mm, 90° Angles from 30° to 150° are available on request.

Anodized Aluminium

Weight: 0,9 kg/each
Part No. 17330

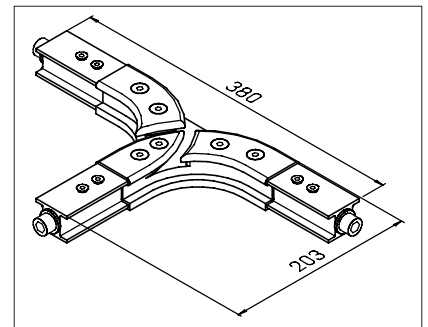
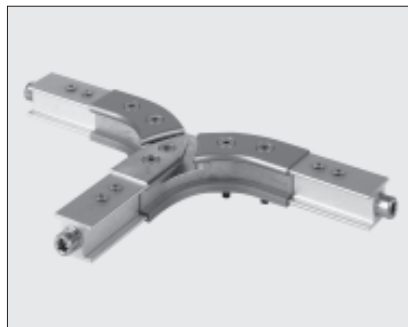


Horizontal track change

For safe change of travel in two directions. The rail systems connected to the unit must meet the unit at 90° angle. We do not recommend using it with the openable fall arrester Part No. 17792.

Stainless Steel/Anodized Aluminium

Weight: 2,7 kg/each
Part No. 20449

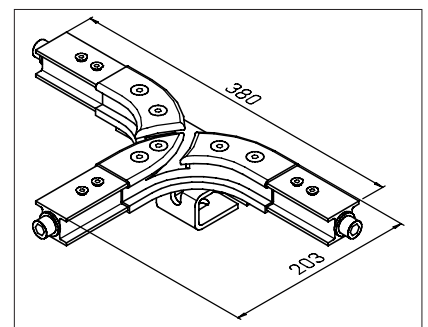
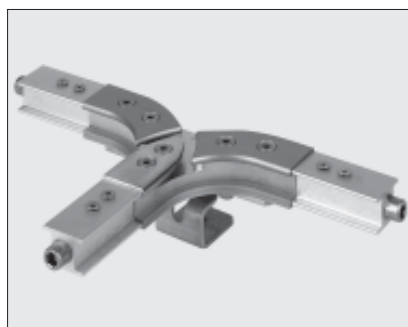


Horizontal track change with bracket

For safe change of travel in two directions. The rail systems connected to the unit must meet the unit at 90° angle. To be used when the anchorage point to the building construction is right under the change. Easy mounting with bracket (Part.No. 17489). We do not recommend using it with the openable fall arrester Part No. 17792. It is not possible to use it with the wheeled gliderpart no. 24168.

Stainless steel/Anodized aluminium

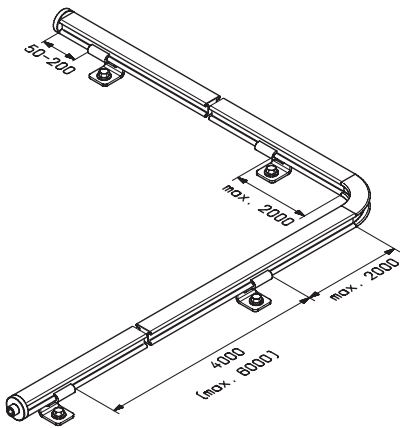
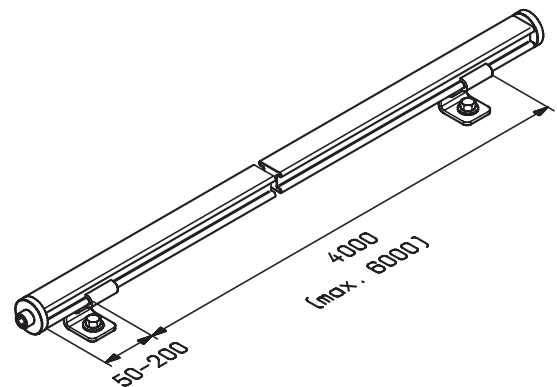
Weight: 3,2 kg/each
Part No. 21967



MultiRail Planning aid for the mounting distances

Straight course of the MultiRail anchoring device: Rail projection at the last bracket: 50 - 200 mm

Mounting distance:	recommended	4000 mm
	maximal	6000 mm



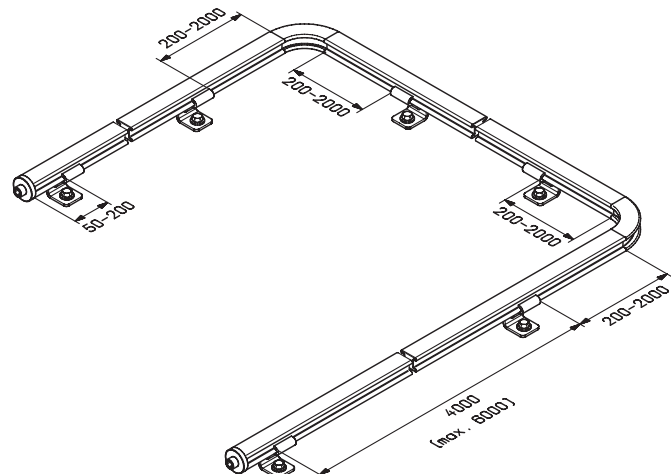
L-shape of the „MultiRail“ anchoring device:
Distance of the bracket to the curve: max. 2000 mm

Special shapes are available after consulting the manufacturer.

U-shape of the „MultiRail“ anchoring device:
Distance of the bracket to the curve: 200 - 2000 mm

Special shapes are available after consulting the manufacturer.

Endless and closed shape of the MultiRail anchoring device available only as an exception and after consulting the manufacturer.



MultiRail

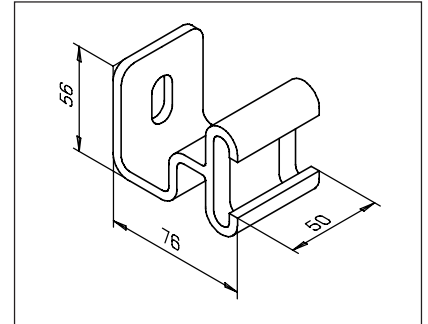
Bracket

The rail can move freely in the brackets (not subject to any constraint). Bolt diameter for fixing: M 12. Screw-on surface parallel to the rail.

Stainless Steel

Weight: 0,4 kg/each

Part No. 17489



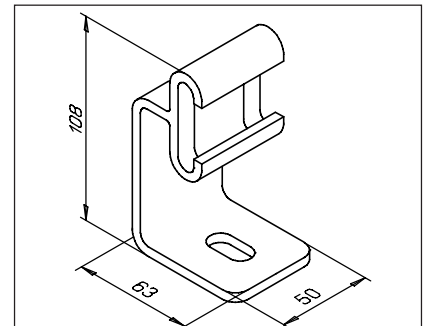
Bracket

The rail can move freely in the brackets (not subject to any constraint). Bolt diameter for fixing: M 12. Screw-on surface at right-angles to the rail.

Stainless Steel

Weight: 0,4 kg/each

Part No. 17112



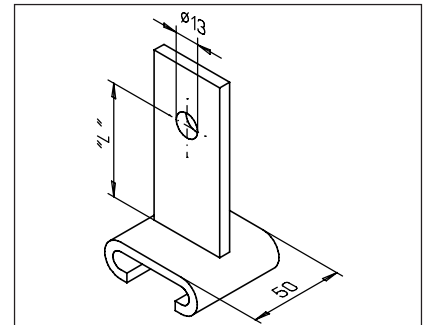
Bracket

With teflon easy-slide ribbons. For over head installation, use screw M12. Projection L= max. 200 mm. The rail slides freely in the bracket. When ordering, state projection "L".

Stainless steel

Weight: 0,4 kg/each

Part No. 21031



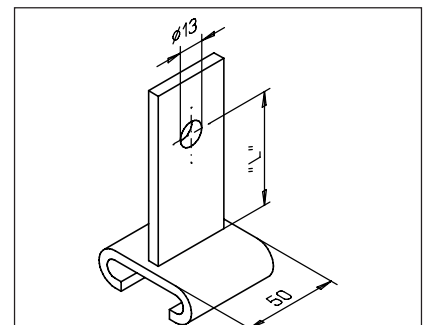
Bracket

With teflon easy-slide ribbons. For over head installation, use screw M12. Projection L= max. 200 mm. The rail slides freely in the bracket. When ordering, state projection "L".

Stainless steel

Weight: 0,4 kg/each

Part No. 21677

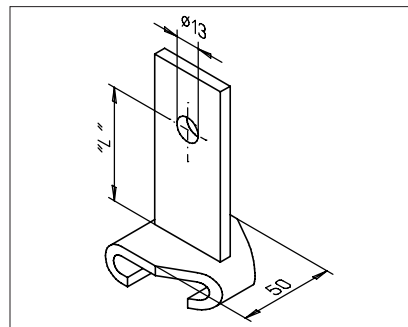


MultiRail

Brackets

With teflon easy-slide ribbons. For mounting on a bend – overhead; fixing screws M12, projection „L“=max.200 mm. State projection „L“ when ordering.

Stainless steel
upon request



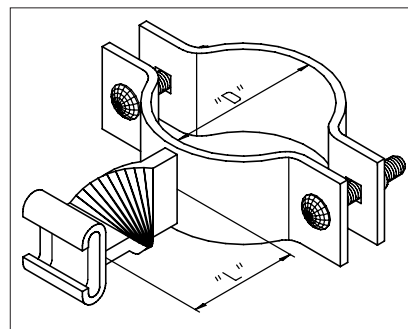
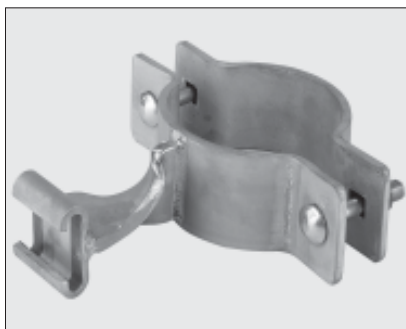
Tube clamp

With teflon easy-slide ribbons. The rail slides freely in the bracket. Projection „L“ = 80-200 mm. Complete with mounting screws. When ordering, state projection „L“ and diameter „D“.

Stainless steel

Weight: depending on size

Part No. MR-BS-1AUSL-<Ø in mm>



Subconstruction pls. refer to MultiPost, Chapter I.

MultiRail

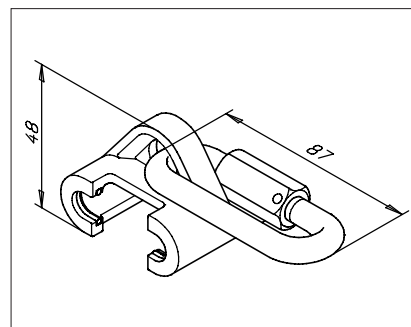
Closed glider

With sliding inserts (made of polyamide) and hook-on ring. To be used also with the horizontal track change Part No. 20449/21967.

Stainless Steel

Weight: 0,4 kg/each

Part No. 17407



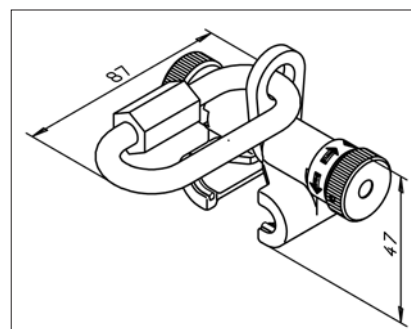
New - Openable glider

With sliding inserts (made of polyamide) and hook-on ring. Can be attached and removed at any point.

Stainless Steel

Weight: 0,6 kg/each

Part No. 17792



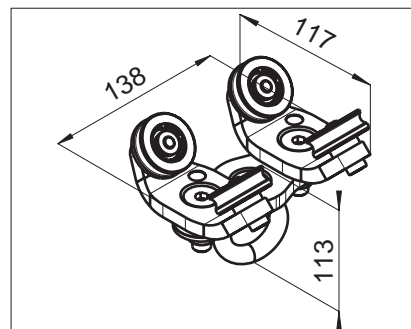
New - Wheeled trolley

To be used when a retractable lanyard (fall arrest block) is connected to the system. The rail system should always be installed above the user including pivotable eyelet. Can be used with rail end stop Part No. 23956 and horizontal bend Part No. 17331.

Stainless Steel

Weight: 1,7 kg/each

Part No. 24168



Recommended fixing distance "a" when using the wheeled glider with a retractable type fall arrester .

Definition of the load "F":

Own load of the retractable type fall arrester + max. retraction load of the retractable type fall arrester.



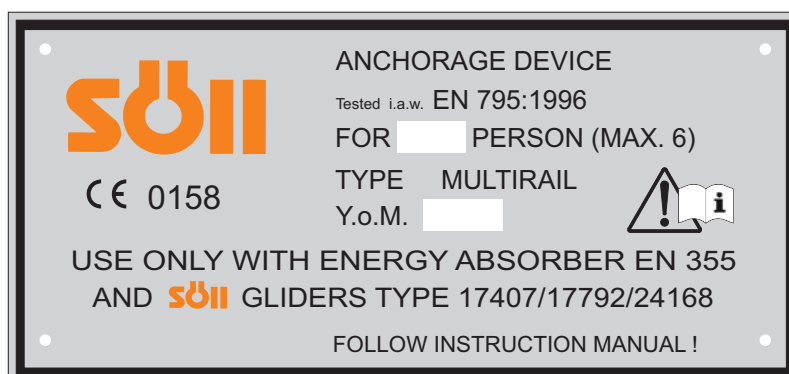
Technical specifications are subject to change without notice.

MultiRail

Label

For fall arrester system – type MultiRail.
Normally one label per system included.
Dimensions: 150 x 70 mm Distance of the hole
135 x 56 mm Ø 2,2 mm

Part No. 21466



Drilling gauge

It serves to make the component holes when the guide rails (Part No. 17488/19146) are shortened at the working site. It can be clamped on the guide rail by a screw ferrule.

upon request

